


Multi-tube Flow Meters also Available!

PTFE FLOW METERS

PTFE flow meters incorporate the principles of traditional variable area flow technology


MATERIALS OF CONSTRUCTION

FLOW TUBES: Heavy walled borosilicate glass.
FITTINGS IN CONTACT WITH FLUIDS: Virgin PTFE PCTFE.
SIDE PANELS: Aluminum, black anodized.
FRONT SHIELD AND BACK PLATE: 1/8" thick clear polycarbonate and white acrylics.
O-RINGS: PTFE.
CONNECTIONS: 1/8" NPT female inlet and outlet connections.
OPTIONAL: Glass hose or compression fittings.

 The selection of materials of construction, is the responsibility of the customer. The company accepts no liability.

SPECIFICATIONS FOR SINGLE TUBE PTFE GLASS FLOW METERS

STANDARD ACCURACY: ±2% FS (mm scales) except 042 and 032 flow tubes.
 ±5% FS (direct reading scales) 042 and 032 mm.
 ± 0.25%
REPEATABILITY: ± 0.25%
USEFUL FLOW RANGES: 10:1 minimum with one float.
MAXIMUM OPERATING PRESSURE: 100 psig/6.7 bars.
MAXIMUM OPERATING TEMPERATURE: 150 °F/ 65 °C.
LEAK INTEGRITY: Individually pressure and leak tested and certified to a rating of 1 x 10⁻⁷ scs Helium.

 The selection of materials of construction, is the responsibility of the customer. The company accepts no liability.

Wetted inert components are surrounded by structurally rigid anodized aluminum.

These rugged PTFE-Glass flow meters offer solutions to low to medium flow range measurements of highly corrosive or ultra-pure liquids and gases.

The resultant design represents a unique combination of a rugged mechanically rigid frame and chemically inert wetted parts.



**65mm PTFE
Flow Meter with
cartridge valve**

TABLE 22, 65MM PTFE FLOW METERS

MAXIMUM FLOW RATE					VALVE OPTION		
AIR		WATER		FLOAT MATERIAL	NO VALVE	CARTRIDGE VALVE CVT	HIGH PRECISION VALVE (HRT)
mL/min	scfh	mL/min	gph		MODEL NO.	MODEL NO.	MODEL NO.
5.8	0.013	N/A		Glass	6AT3101N6	6AT3101C6	6AT3101M6
9	0.017			Sapphire	6AT3102N6	6AT3102C6	6AT3102M6
19	0.036			316 S.S.	6AT3103N6	6AT3103C6	6AT3103M6
33	0.070			Carboloy®	6AT3104N6	6AT3104C6	6AT3104M6
49	0.104	0.55	0.009	Glass	6AT3105N6	6AT3105C6	6AT3105M6
74	0.153	0.98	0.016	Sapphire	6AT3106N6	6AT3106C6	6AT3106M6
145	0.307	2.38	0.038	316 S.S.	6AT3107N6	6AT3107C6	6AT3107M6
246	0.528	4.60	0.073	Carboloy®	6AT3108N6	6AT3108C6	6AT3108M6
107	0.22	1.13	0.020	Glass	6AT3109N6	6AT3109C6	6AT3109M6
167	0.35	2.19	0.035	Sapphire	6AT3110N6	6AT3110C6	6AT3110M6
314	0.66	4.97	0.079	316 S.S.	6AT3111N6	6AT3111C6	6AT3111M6
517	1.09	9.23	0.146	Carboloy®	6AT3112N6	6AT3112C6	6AT3112M6
216	0.46	5.71	0.090	Glass	6AT3113N6	6AT3113C6	6AT3113M6
320	0.68	10.00	0.158	Sapphire	6AT3114N6	6AT3114C6	6AT3114M6
538	1.14	19.2	0.301	316 S.S.	6AT3115N6	6AT3115C6	6AT3115M6
826	1.75	31.6	0.500	Carboloy®	6AT3116N6	6AT3116C6	6AT3116M6
1036	2.20	20	0.327	Glass	6AT3117N6	6AT3117C6	6AT3117M6
1383	2.93	33	0.523	Sapphire	6AT3118N6	6AT3118C6	6AT3118M6
2088	4.42	57	0.903	316 S.S.	6AT3119N6	6AT3119C6	6AT3119M6
3007	6.37	89	1.410	Carboloy®	6AT3120N6	6AT3120C6	6AT3120M6
1249	2.65	25	0.396	Glass	6AT3121N6	6AT3121C6	6AT3121M6
1623	3.44	36.7	0.581	Sapphire	6AT3122N6	6AT3122C6	6AT3122M6
2520	5.34	70.7	1.121	316 S.S.	6AT3123N6	6AT3123C6	6AT3123M6
3680	7.80	103.5	1.641	Carboloy®	6AT3124N6	6AT3124C6	6AT3124M6
2030	4.3	39.5	0.61	Glass	6AT3125N6	6AT3125C6	6AT3125M6
2655	5.62	63.2	0.99	Sapphire	6AT3126N6	6AT3126C6	6AT3126M6
4041	8.56	111.7	1.75	316 S.S.	6AT3127N6	6AT3127C6	6AT3127M6
5769	12.22	172	2.72	Carboloy®	6AT3128N6	6AT3128C6	6AT3128M6
2522	5.35	54.7	0.86	Glass	6AT3129N6	6AT3129C6	6AT3129M6
4917	10.42	143	2.26	316 S.S.	6AT3130N6	6AT3130C6	6AT3130M6
6318	13.4	147	2.33	Glass	6AT3131N6	6AT3131C6	6AT3131M6
8145	17.3	217	3.44	Sapphire	6AT3132N6	6AT3132C6	6AT3132M6
12058	25.5	364	5.77	316 S.S.	6AT3133N6	6AT3133C6	6AT3133M6
16943	35.9	540	8.56	Carboloy®	6AT3134N6	6AT3134C6	6AT3134M6
12860	27.2	307	4.86	Glass	6AT3135N6	6AT3135C6	6AT3135M6
16617	35.2	449	7.11	Sapphire	6AT3136N6	6AT3136C6	6AT3136M6
24452	51.8	723	11.46	316 S.S.	6AT3137N6	6AT3137C6	6AT3137M6
34507	73.1	1049	16.63	Carboloy®	6AT3138N6	6AT3138C6	6AT3138M6
21969	46.5	550	8.71	Glass	6AT3139N6	6AT3139C6	6AT3139M6
28518	60.4	811	12.85	Sapphire	6AT3140N6	6AT3140C6	6AT3140M6
41289	87.4	1297	20.56	316 S.S.	6AT3141N6	6AT3141C6	6AT3141M6
58348	123.6	1895	30.04	Carboloy®	6AT3142N6	6AT3142C6	6AT3142M6

Carboloy® is only recommended for ultra pure fluids and is NOT recommended for corrosive fluids.

PTFE FLOW METERS

Multi-tube Flow Meters also Available!

PTFE flow meters are available with built-in needle valves (CVT™), high precision metering valves (HRT™) with "non-rising stems", or with no valves.

The higher cost of HRT™ valves is justified whenever high sensitivity control and resolution are desirable, particularly in conjunction with metering tubes of very low flow rates.

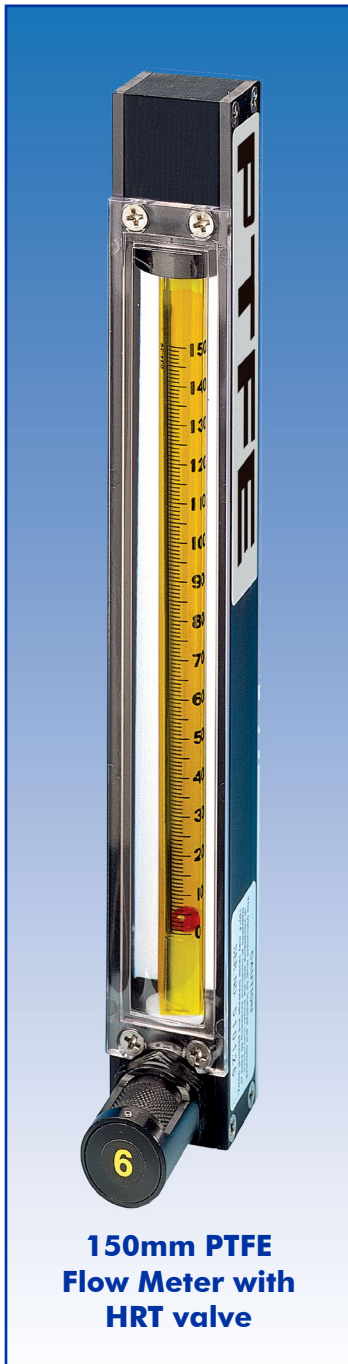
When meters with valves are ordered, the valve cartridges are installed at the inlet. For vacuum service, it is recommended that meters are ordered with valves at the outlet.

MATERIALS OF CONSTRUCTION

- FLOW TUBES:** Heavy walled borosilicate glass.
- FITTINGS IN CONTACT WITH FLUIDS:** Virgin PTFE PCTFE.
- SIDE PANELS:** Aluminum, black anodized.
- FRONT SHIELD AND BACK PLATE:** 1/8" thick clear polycarbonate and white acrylics.
- O-RINGS:** PTFE.
- CONNECTIONS:** 1/8" NPT female inlet and outlet connections.
- OPTIONAL:** Glass hose or compression fittings.



The selection of materials of construction, is the responsibility of the customer. The company accepts no liability.



150mm PTFE Flow Meter with HRT valve

MAXIMUM FLOW RATE					VALVE OPTION		
AIR		WATER		FLOAT MATERIAL	NO VALVE	CARTRIDGE VALVE CVT	HIGH PRECISION VALVE (HRT)
mL/min	scfh	mL/min	gph		MODEL NO.	MODEL NO.	MODEL NO.
11.6	0.024	N/A		Glass	6AT3101N1	6AT3101C1	6AT3101M1
18.3	0.038			Sapphire	6AT3102N1	6AT3102C1	6AT3102M1
34	0.07			316 S.S.	6AT3103N1	6AT3103C1	6AT3103M1
62.8	0.13			Carboloy®	6AT3104N1	6AT3104C1	6AT3104M1
46.6	0.098	0.50	0.007	Glass	6AT3105N1	6AT3105C1	6AT3105M1
73.1	0.154	0.99	0.015	Sapphire	6AT3106N1	6AT3106C1	6AT3106M1
138.3	0.293	2.36	0.037	316 S.S.	6AT3107N1	6AT3107C1	6AT3107M1
239.1	0.506	4.60	0.072	Carboloy®	6AT3108N1	6AT3108C1	6AT3108M1
91.6	0.194	1.13	0.020	Glass	6AT3109N1	6AT3109C1	6AT3109M1
144.3	0.306	2.19	0.035	Sapphire	6AT3110N1	6AT3110C1	6AT3110M1
262.2	0.556	4.97	0.079	316 S.S.	6AT3111N1	6AT3111C1	6AT3111M1
431.7	0.915	9.23	0.146	Carboloy®	6AT3112N1	6AT3112C1	6AT3112M1
370.6	0.784	5.71	0.090	Glass	6AT3113N1	6AT3113C1	6AT3113M1
513.3	1.087	10.00	0.158	Sapphire	6AT3114N1	6AT3114C1	6AT3114M1
816.0	1.729	19.2	0.301	316 S.S.	6AT3115N1	6AT3115C1	6AT3115M1
1216.9	2.579	31.6	0.500	Carboloy®	6AT3116N1	6AT3116C1	6AT3116M1
817	1.731	15.2	0.240	Glass	6AT3117N1	6AT3117C1	6AT3117M1
1093	2.316	24.9	0.394	Sapphire	6AT3118N1	6AT3118C1	6AT3118M1
1665	3.528	44.3	0.702	316 S.S.	6AT3119N1	6AT3119C1	6AT3119M1
2405	5.096	69.0	1.094	Carboloy®	6AT3120N1	6AT3120C1	6AT3120M1
2214	4.690	49.9	0.792	Glass	6AT3121N1	6AT3121C1	6AT3121M1
2975	6.300	77.7	1.234	Sapphire	6AT3122N1	6AT3122C1	6AT3122M1
4494	9.520	132.5	2.092	316 S.S.	6AT3123N1	6AT3123C1	6AT3123M1
6467	13.70	203.2	3.218	Carboloy®	6AT3124N1	6AT3124C1	6AT3124M1
3780	8.00	89	1.411	Glass	6AT3125N1	6AT3125C1	6AT3125M1
4942	10.47	134	2.124	Sapphire	6AT3126N1	6AT3126C1	6AT3126M1
7720	16.35	226	3.582	316 S.S.	6AT3127N1	6AT3127C1	6AT3127M1
10780	22.84	343	5.437	Carboloy®	6AT3128N1	6AT3128C1	6AT3128M1
8555	18.12	200	3.170	Glass	6AT3129N1	6AT3129C1	6AT3129M1
11140	23.60	301	4.771	Sapphire	6AT3130N1	6AT3130C1	6AT3130M1
16493	34.94	498	7.893	316 S.S.	6AT3131N1	6AT3131C1	6AT3131M1
23001	48.73	736	11.67	Carboloy®	6AT3132N1	6AT3132C1	6AT3132M1
23105	48.95	579	9.177	Glass	6AT3133N1	6AT3133C1	6AT3133M1
29410	62.30	833	13.2	Sapphire	6AT3134N1	6AT3134C1	6AT3134M1
42860	90.80	1339	21.22	316 S.S.	6AT3135N1	6AT3135C1	6AT3135M1
60212	127.5	1972	31.26	Carboloy®	6AT3136N1	6AT3136C1	6AT3136M1

Carboloy® is only recommended for ultra pure fluids and is NOT recommended for corrosive

MEDIUM RANGE PTFE FLOW METERS

Incorporating traditional variable area precision glass technology, these rugged PTFE flow meters offer accurate and economical solutions to medium flow range measurements. These meters are designed with unique rotatable scales of dual air-water direct reading graduations showing SCFM and L/min (air), as well as GPM and LPM (water) markings.

LEAK INTEGRITY

Flow meters are individually tested on a Mass Spectrometer Leak Detector and certified to a leak integrity rating of 1×10^{-7} sccs Helium or better.

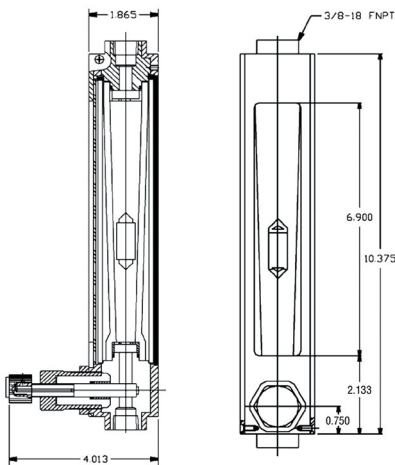
SPECIFICATIONS FOR PTFE FLOW METERS

TUBE SHIELDS:	Polycarbonate.
FLOW TUBES:	Heavy walled precision formed borosilicate glass.
FLOATS:	PTFE.
WETTED PARTS:	PTFE, PCTFE.
SEALS:	PTFE.
SCALES:	Rotatable, direct reading air, (SCFM-L/min) and water (GPM-LPM). Scale length is 127mm (nominal).
ACCURACY:	+5% of full scale.
MAXIMUM TEMPERATURE:	150 °F (65 °C.)
MAXIMUM PRESSURE:	100 PSIG (6.7) bars.
CONNECTIONS:	3/8" NPT female In-Line or horizontal rear.
LEAK INTEGRITY:	Individually leak tested and certified.

 The selection of materials of construction, is the responsibility of the customer. The company accepts no liability.



Dimensions In-Line Model



Dimensions Panel Mount Model

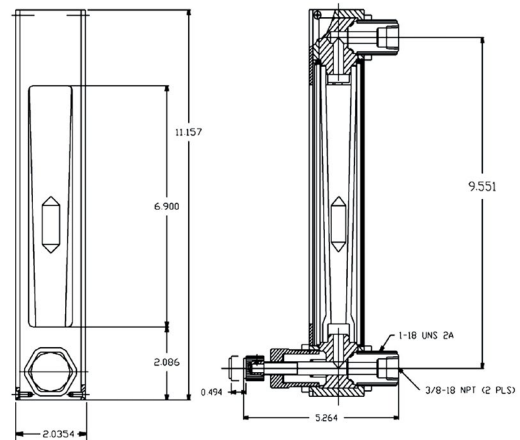


TABLE 27, MEDIUM RANGE PTFE FLOW METERS

MAXIMUM FLOW RANGES				IN-LINE MOUNT		PANEL MOUNT	
AIR		WATER		NO VALVE	VALVE	NO VALVE	VALVE
SCFM	SLPM	GPM	LPM	MODEL NO.	MODEL NO.	MODEL NO.	MODEL NO.
3.5	100	0.8	3.0	6AV9101TNI	6AV9101TVI	6AV9101TNP	6AV9101TVP
7.0	200	1.5	5.75	6AV9102TNI	6AV9102TVI	6AV9102TNP	6AV9102TVP
10.5	300	2.2	8.25	6AV9103TNI	6AV9103TVI	6AV9103TNP	6AV9103TVP
14.0	400	2.9	11.0	6AV9104TNI	6AV9104TVI	6AV9104TNP	6AV9104TVP
17.5	500	3.5	13.25	6AV9105TNI	6AV9105TVI	6AV9105TNP	6AV9105TVP
22.0	625	4.1	16.0	6AV9106TNI	6AV9106TVI	6AV9106TNP	6AV9106TVP

6AL PANEL MOUNT PTFE / FEP FLOW METERS

Incorporating the principles of traditional variable area flow technology, these rugged PTFE-FEP flow meters offer solutions for low to medium flow range measurements of highly corrosive or ultra-pure liquids.

PTFE FEP Flow Meters



FEATURES

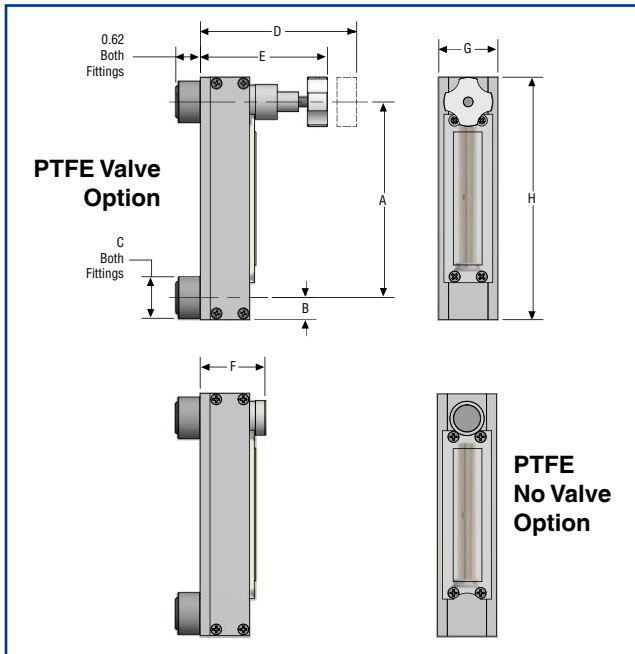
- ✓ Resistant to external, ambient corrosives.
- ✓ Panel mountable, by means of KYNAR® panel nuts.
- ✓ Leak Integrity 1 X 10⁻⁷ sccs Helium or better.
- ✓ Chemically inert wetted components constructed from FEP PTFE and PCTFE.
- ✓ Non-fluid contacting structurally rigid frame constructed from polypropylene and Kynar®.
- ✓ Overlapping flow ranges are available for water from 5 mL/min (0.00132 GPM) to 45 L/min (12 GPM).
- ✓ Supplied with or without built-in needle valves.

SPECIFICATIONS FOR PTFE FEP FLOW METERS

SCALES: Direct reading scales for liquids with 1.0 specific gravity.
ACCURACY: +5% of full scale.
MAX. TEMPERATURE: 250 °F (121 °C).
MAX PRESSURE: 100 PSIG (6.7 BARS).
FLOW TUBES: FEP.
FLOATS: PTFE (Sapphire Size for Models 6AL7101LN, 6AL7101LV).
WETTED PARTS: FEP (flow tubes) and PTFE (end fittings and floats) and PCTFE (guide rods).



The selection of materials of construction, is the responsibility of the customer. The company accepts no liability.



DIMENSIONS FOR PTFE-FEP FLOW METERS									
METER SIZE	DIMENSIONAL CODING								SCALE LENGTH
	A	B	C	D	E	F	G	H	
C	4.97	0.56	1.06	3.42	3.22	1.65	1.50	6.16	75mm
D	4.97	0.56	1.25	4.72	4.32	1.95	1.75	6.16	75mm
E	8.72	0.88	1.75	4.64	4.14	2.25	2.25	10.47	125mm
F	8.47	1.00	1.75	6.00	5.06	2.80	2.50	10.47	125mm

*Dimensions are in inches, except as shown in [mm]; for certified dimensions contact the company.

TABLE 28, PTFE-FEP FLOW METERS FOR WATER (NO VALVE OPTION)

METER SIZE	MODEL NO.	MAXIMUM FLOW		BUILT-IN VALVE	CONNECTION
		mL/min	gph		
C	6AL7101LN	75	1.2	No	1/4" FNPT
	6AL7102LN	250	4.0	No	
	6AL7103LN	400	6.5	No	
	6AL7104LN	500	8.0	No	
	6AL7105LN	1000	16.0	No	
METER SIZE	MODEL NO.	MAXIMUM FLOW		BUILT-IN VALVE	CONNECTION
		L/min	gph		
D	6AL7110LN	2.0	31.0	No	3/8" FNPT
	6AL7111LN	2.5	40.0	No	
	6AL7112LN	3.0	47.5	No	
	6AL7113LN	5.0	80.0	No	
METER SIZE	MODEL NO.	MAXIMUM FLOW		BUILT-IN VALVE	CONNECTION
		L/min	gpm		
E	6AL7120LN	13	3.4	No	1/2" FNPT
	6AL7121LN	20	5.25	No	
F	6AL7122LN	30	8.0	No	3/4" FNPT
	6AL7123LN	40	10.5	No	
	6AL7124LN	45	12.0	No	

TABLE 28-1, PTFE-FEP FLOW METERS FOR WATER (VALVE OPTION)

METER SIZE	MODEL NO.	MAXIMUM FLOW		BUILT-IN VALVE	CONNECTION
		mL/min	gph		
C	6AL7101LV	75	1.2	Yes	1/4" FNPT
	6AL7102LV	250	4.0	Yes	
	6AL7103LV	400	6.5	Yes	
	6AL7104LV	500	8.0	Yes	
	6AL7105LV	1000	16.0	Yes	
METER SIZE	MODEL NO.	MAXIMUM FLOW		BUILT-IN VALVE	CONNECTION
		L/min	gph		
D	6AL7110LV	2.0	31.0	Yes	3/8" FNPT
	6AL7111LV	2.5	40.0	Yes	
	6AL7112LV	3.0	47.5	Yes	
	6AL7113LV	5.0	80.0	Yes	
METER SIZE	MODEL NO.	MAXIMUM FLOW		BUILT-IN VALVE	CONNECTION
		L/min	gpm		
E	6AL7120LV	13	3.4	Yes	1/2" FNPT
	6AL7121LV	20	5.25	Yes	
F	6AL7122LV	30	8.0	Yes	3/4" FNPT
	6AL7123LV	40	10.5	Yes	
	6AL7124LV	45	12.0	Yes	

SERIES 6AF IN-LINE PTFE FLOW METERS

In-Line PTFE Flow Meter with Valve



FEATURES

- ✓ Chemically inert wetted components.
- ✓ Removable protective shield.
- ✓ Individually leak tested.

Made entirely of PTFE, FEP, and PCTFE, the In-Line PTFE flow meter is excellent for high-purity applications or use with corrosive liquids.

Models are available with a standard valve to monitor and control flow or without a valve to just monitor flow. Flow meters are individually tested on a Mass Spectrometer Leak Detector and certified to a leak integrity rating of 1×10^{-7} sccs Helium or better.

In-Line PTFE Flow Meter with out Valve



SPECIFICATIONS

SCALES: Direct reading scales for liquids with 1.0 specific gravity.

ACCURACY: $\pm 5\%$ of full scale.

MAXIMUM TEMPERATURE: 250 °F (121 °C).

MAXIMUM PRESSURE: 100 PSIG (6.7 bars).

LEAK INTEGRITY: Individually, leak tested and certified to a rating of 1×10^{-7} sccs of Helium.


MATERIALS OF CONSTRUCTION

TUBE SHIELDS: Polycarbonate.

FLOW TUBES: FEP.

FLOATS: PTFE.

WETTED PARTS: PTFE end fittings. PCTFE guide rods.

 The selection of materials of construction, is the responsibility of the customer. The company accepts no liability.

MODEL NO.	MAXIMUM FLOW RATE		BUILT-IN VALVE	FITTINGS
	WATER (mL/min)	WATER (gph)		
6AF8101FN	125	2.0	No	1/4" FNPT
6AF8102FN	250	4.0	No	
6AF8103FN	400	6.5	No	
6AF8104FN	500	8.0	No	
6AF8105FN	1000	16.0	No	
MODEL NO.	MAXIMUM FLOW RATE		BUILT-IN VALVE	FITTINGS
	WATER (L/min)	WATER (gph)		
6AF8106FN	2.0	30.0	No	3/8" FNPT
6AF8107FN	2.5	40.0	No	
6AF8108FN	3.0	50.0	No	
6AF8109FN	5.0	80.0	No	
MODEL NO.	MAXIMUM FLOW RATE		BUILT-IN VALVE	FITTINGS
	WATER (L/min)	WATER (gpm)		
6AF8120FN	13.0	3.5	No	1/2" FNPT
6AF8121FN	20.0	5.2	No	3/4" FNPT
6AF8122FN	30.0	8.0	No	
6AF8123FN	40.0	10.5	No	
6AF8124FN	45.0	12.0	No	

MODEL NO.	MAXIMUM FLOW RATE		BUILT-IN VALVE	FITTINGS
	WATER (mL/min)	WATER (gph)		
6AF8101FV	125	2.0	Yes	1/4" FNPT
6AF8102FV	250	4.0	Yes	
6AF8103FV	400	6.5	Yes	
6AF8104FV	500	8.0	Yes	
6AF8105FV	1000	16.0	Yes	
MODEL NO.	MAXIMUM FLOW RATE		BUILT-IN VALVE	FITTINGS
	WATER (L/min)	WATER (gph)		
6AF8106FV	2.0	30.0	Yes	3/8" FNPT
6AF8107FV	2.5	40.0	Yes	
6AF8108FV	3.0	50.0	Yes	
6AF8109FV	5.0	80.0	Yes	
MODEL NO.	MAXIMUM FLOW RATE		BUILT-IN VALVE	FITTINGS
	WATER (L/min)	WATER (gpm)		
6AF8120FV	13.0	3.5	Yes	1/2" FNPT
6AF8121FV	20.0	5.2	Yes	3/4" FNPT
6AF8122FV	30.0	8.0	Yes	
6AF8123FV	40.0	10.5	Yes	
6AF8124FV	45.0	12.0	Yes	

In-Line PTFE Flow Meter No Valve Option

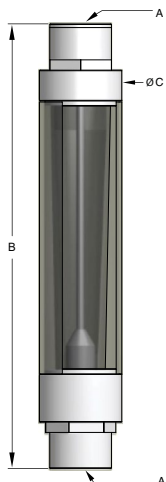


TABLE 29-2, 6AF STYLE IN-LINE PTFE FLOW METER DIMENSIONS NO VALVE OPTION

MODEL	A	B	C
6AF8101FN	1/4" FNPT	5.52" (140.2 mm)	1.25" (31.8 mm)
6AF8102FN			
6AF8103FN			
6AF8104FN			
6AF8105FN			
6AF8106FN	3/8" FNPT	5.52" (140.2 mm)	1.25" (31.8 mm)
6AF8107FN			
6AF8108FN			
6AF8109FN			
6AF8120FN	1/2" FNPT	10.81" (274.6 mm)	2.00" (50.8 mm)
6AF8121FN			
6AF8122FN			
6AF8123FN			
6AF8124FN	3/4" FNPT	10.81" (274.6 mm)	2.00" (50.8 mm)

In-Line PTFE Flow Meter Valve Option

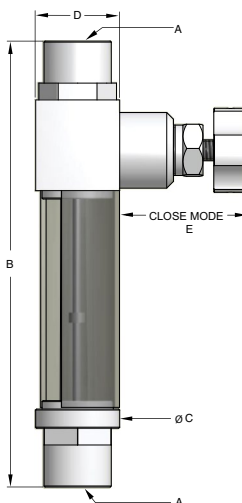


TABLE 29-3, 6AF STYLE IN-LINE PTFE FLOW METER DIMENSIONS VALVE OPTION

MODEL	A	B	C	D	E
6AF8101FV	1/4" FNPT	6.65" (168.9 mm)	1.25" (31.8 mm)	1.25" (31.8 mm)	3.17" (80.5 mm)
6AF8102FV					
6AF8103FV					
6AF8104FV					
6AF8105FV					
6AF8106FV	3/8" FNPT	6.65" (168.9 mm)	1.25" (31.8 mm)	1.25" (31.8 mm)	3.17" (80.5 mm)
6AF8107FV					
6AF8108FV					
6AF8109FV					
6AF8120FV	1/2" FNPT	12.35" (313.7 mm)	2.00" (50.8 mm)	2.00" (50.8 mm)	3.88" (98.5 mm)
6AF8121FV					
6AF8122FV					
6AF8123FV					
6AF8124FV	3/4" FNPT	12.35" (313.7 mm)	2.00" (50.8 mm)	2.00" (50.8 mm)	3.88" (98.5 mm)