

ACRYLIC FLOW METERS

Series 6B71 Flow Meter



6B71 FEATURES

- ✓ Durable, Highly Polished, One Piece Meter Body.
- ✓ Easy to Read Direct Reading Permanent Scale (GPM/LPM).
- ✓ #316 Stainless Steel Floats and Float Guides.
- ✓ Sturdy Adapters with High Grade FKM O-Ring Seals.
- ✓ Bulkhead Nuts Attach Directly Inside Panel.
- ✓ Separate Mounting Screws are Not Required.
- ✓ Optional Adjustable Flow Control Valve.
- ✓ Easy to Disassemble.
- ✓ Acceptable in Direct Sunlight Applications.

DIMENSIONAL CHART 6B71						
MODEL	A	B	C	D	E	MOUNT
MODELS WITH NO ADJUSTABLE VALVE						
6B7100-01	7-1/4"	2-1/2"	1-1/16"	5-5/8"	1-1/4"	9/16"
6B7100-02 6B7100-03	8-3/8"	2-3/4"	1-11/32"	6-1/2"	1-1/2"	11/16"
6B7100-04	8-3/8"	2-3/4"	1-11/32"	6-1/2"	1-1/2"	7/8"
6B7100-05	9"	3-3/4"	1-1/2"	6-1/2"	1-3/4"	1-1/16"
6B7100-06 to 6B7100-09	10-5/8"	4"	1-3/4"	8"	2"	1-21/64"
MODELS WITH ADJUSTABLE VALVE						
6B7101-01	7-1/4"	3-7/16"	1"	5-5/8"	2-7/16"	1-11/32"
6B7101-02 6B7101-04	8-3/8"	4-1/2"	1-11/32"	6-1/2"	3-1/4"	1-3/4"
6B7101-05	9"	5-1/2"	1-1/2"	6-1/2"	3-1/4"	1-5/16"
6B7101-07 to 6B7101-09	10-5/8"	5-1/4"	1-3/4"	8"	3-1/2"	1-7/16"

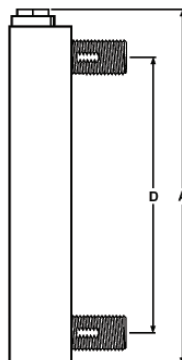
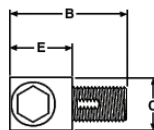


TABLE 15, MODEL 6B71 PANEL MOUNT ACRYLIC FLOW METERS				
MODEL NO.	ADAPTER SIZE	FLOW RANGE	FLOAT	HEIGHT CENTER - CENTER
STANDARD MODELS FOR LIQUID (GPM / LPM OF WATER)				
6B7100-01B	1/4" MNPT	0.025-0.250 GPM, 0.1-1.0 LPM	316 SS	5 5/8"
6B7100-02C	3/8" MNPT	0.1-1.0 GPM, 0.4-4.0 LPM		6 1/2"
6B7100-03C		0.2-2.0 GPM, 0.75-7.5 LPM		
6B7100-04D	1/2" MNPT	0.5-5.0 GPM, 2.0-20 LPM	PTFE	8"
6B7100-05E	3/4" MNPT	1.0-10 GPM, 4.0-40 LPM		
6B7100-06F	1" MNPT	1.0-5.0 GPM, 3.0-18 LPM	316 SS	8"
6B7100-07F		1.0-10 GPM, 4.0-40 LPM		
6B7100-08F		1.0-15 GPM, 5.0-60 LPM		
6B7100-09F		2.0-20 GPM, 7.5-75 LPM		

TABLE 15-1, MODEL 6B71 PANEL MOUNT ACRYLIC FLOW METERS WITH ADJUSTABLE VALVE				
MODEL NO.	ADAPTER SIZE	FLOW RANGE	FLOAT	HEIGHT CENTER - CENTER
STANDARD MODELS FOR LIQUID (GPM / LPM OF WATER)				
6B7101-01B	1/4" MNPT	0.025-0.250 GPM, 0.1-1.0 LPM	316 SS	5 5/8"
6B7101-02C	3/8" MNPT	0.1-1.0 GPM, 0.4-4.0 LPM		6 1/2"
6B7101-03C		0.2-2.0 GPM, 0.75-7.5 LPM		
6B7101-04D	1/2" MNPT	0.5-5.0 GPM, 2.0-20 LPM	PTFE	8"
6B7101-05E	3/4" MNPT	1.0-10 GPM, 4.0-40 LPM		
6B7101-06F	1" MNPT	1.0-5.0 GPM, 3.0-18 LPM	316 SS	8"
6B7101-07F		1.0-10 GPM, 4.0-40 LPM		
6B7101-08F		1.0-15 GPM, 5.0-60 LPM		
6B7101-09F		2.0-20 GPM, 7.5-75 LPM		

SPECIFICATIONS FOR 6B71

- FULL SCALE ACCURACY:** ±5%.
- MAXIMUM WORKING PRESSURE:** 250 PSIG (17.2 Bar) @ 70 °F (21 °C).
- MAXIMUM FLUID TEMPERATURE:** 200 °F (93 F C) @ 0 Pressure.
- METER BODY MATERIAL:** Machined Acrylic.
- ADAPTERS MATERIAL:** Polypropylene.
- O-RING SEALS:** FKM.
- GUIDE ROD:** 316 SS.
- CALIBRATION FLUID:** Water, Specific Gravity 1.0.
- APPROXIMATE SHIPPING WEIGHT:** 2 lbs. (.91 kg).

The selection of materials of construction, is the responsibility of the customer. The company accepts no liability.